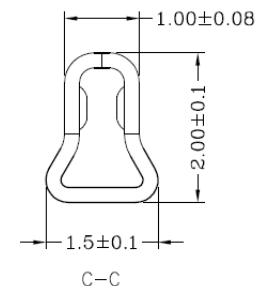
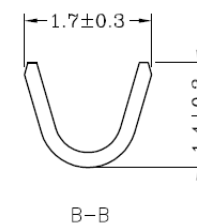
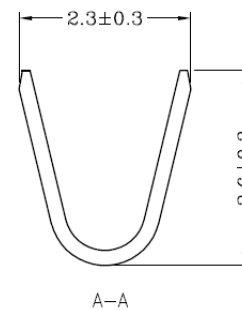
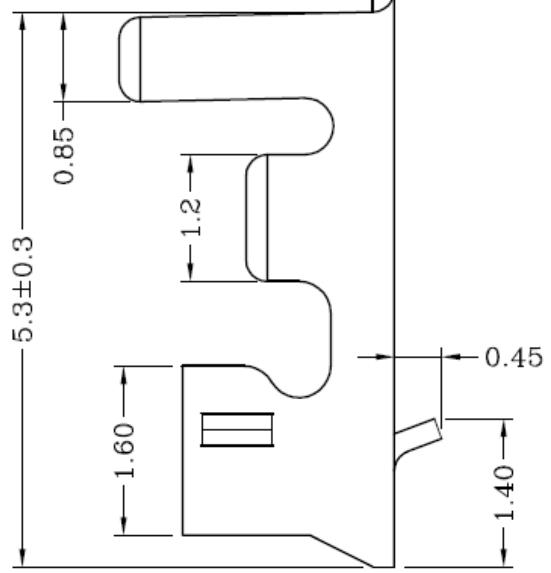


0.20±0.05

NOTE:  
 Material: Phosphor Bronze  
 Finish: Tin plated  
 Wire range: AWG #30~#24

RoHS  
 Compliant



### Ordering Information

TG PHTB F 2 - 44

2.0Ph Terminal      F: Female      2: Reel Packing

REV.	REVISION RECORD	DATE	General Tolerance		
A	Original	09/11/20"	LINEAR	0.0 ±0.25 0.00 ±0.20	
					UNIT: mm
			A4	DATE	TITLE: 2.0Ph Terminal Female Type 5.3L
			APPROVED	KENNY	DWG.NO: TGPHTBF2-44
			DESIGNER	GRACE	REV. A
			DRAWN	JINDAR	SCALE 1 : 1 SHEET 1 OF 1