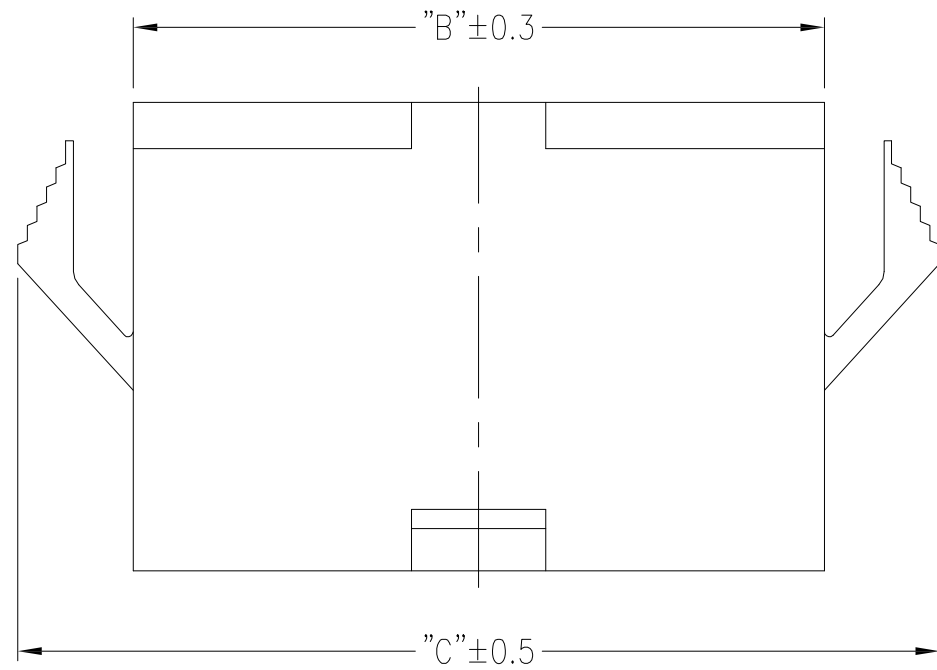
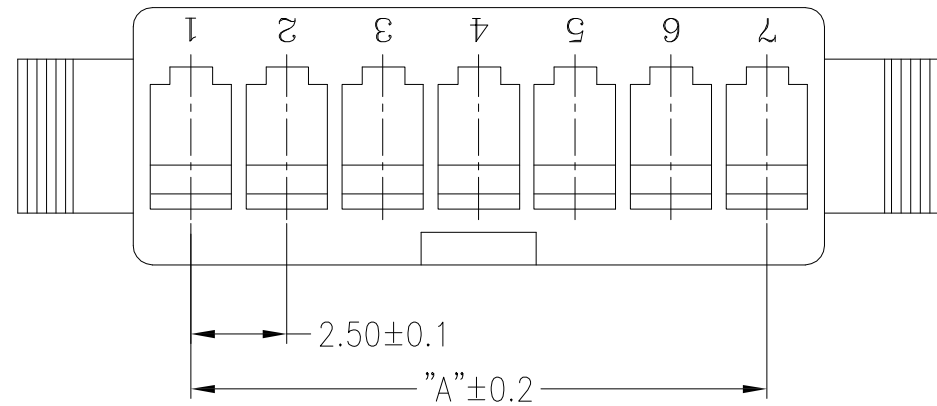
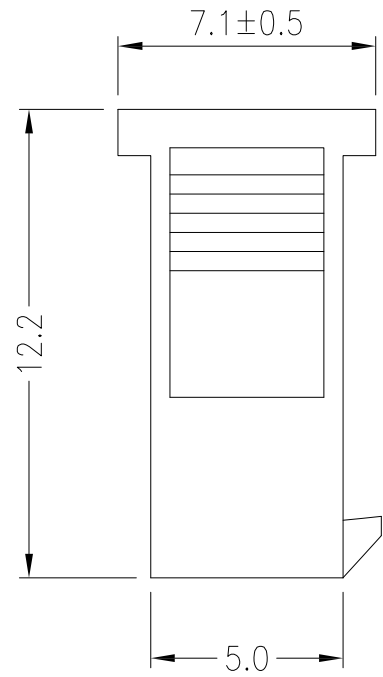


Poles	DIM.A	DIM.B	DIM.C
2	2.5	5.5	11.5
3	5.0	8.0	14.0
4	7.5	10.5	16.5
5	10.0	13.0	19.0
6	12.5	15.5	21.5
7	15.0	18.0	24.0
8	17.5	20.5	26.5
9	20.0	23.0	29.0
10	22.5	25.5	31.5
11	25.0	28.0	34.0
12	27.5	30.5	36.5

RoHS
Compliant



SPECIFICATIONS

- ◆ Applicable Wire: #28~#22
- ◆ Rated voltage: 250V DC,AC(rms)
- ◆ Rated Current: 3A(AWG#22)
- ◆ Withstand voltage: 1500V AC/min.
- ◆ Working Temp : -25°C ~ +85°C
- ◆ Insulation resistance: ≥500 MΩ

MATERIAL

- ◆ Insulator: PA66 UL94V-2

Ordering Information

HH XX SMNY B - 44
 2.5Ph Housing PIN No B: Bag Packing

REV.	REVISION RECORD	DATE	General Tolerance		
A	Original	04/20/22	LINEAR	0.0 ±0.25 ANGLE ±3°	
				UNIT:mm	TITLE: 2.5 Pitch Housing 12.2L DWG.NO: HHXXSMNYB-44 REV. A
			A4	NAME	
			APPROVED	KENNY	
			DESIGNER	GRACE	
			DRAWN	JINDAR	SCALE 1 : 1 SHEET 1 OF 1