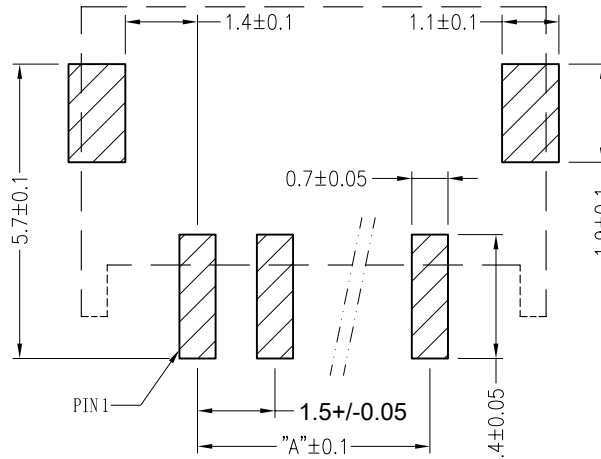
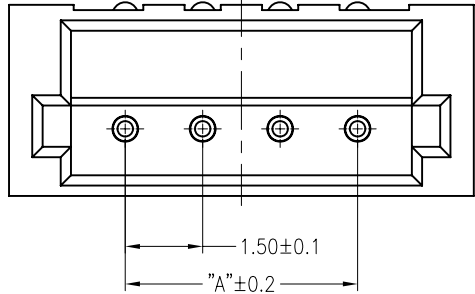
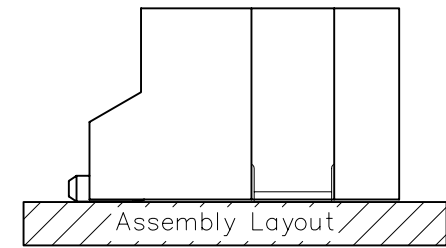
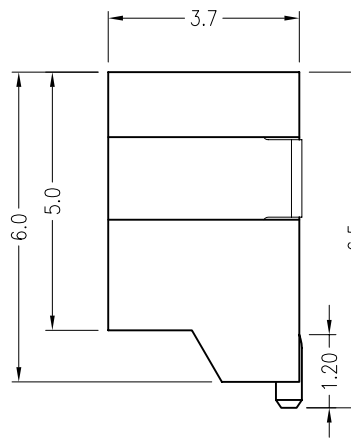
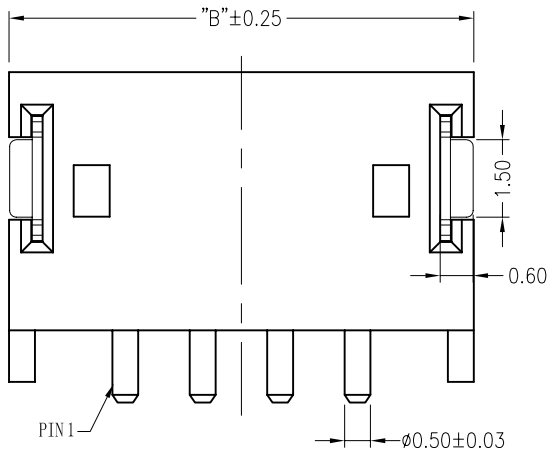


	1	2	3	4	5	6	7	8
	Poles	DIM.A	DIM.B					
A	2	1.5	6.0					
	3	3.0	7.5					
	4	4.5	9.0					
B	5	6.0	10.5					
	6	7.5	12.0					
	7	9.0	13.5					
	8	10.5	15.0					
C	9	12.0	16.5					
	10	13.5	18.0					
	11	15.0	19.5					
	12	16.5	21.0					
	13	18.0	22.5					
D	14	19.5	24.0					
	15	21.0	25.5					
	16	22.5	27.0					



RECOMMENDED PCB LAYOUT



SPECIFICATION:

- Voltage rating:
AC, DC, 50V(rms)
- Current rating:
1A (AWG #26)
- Withstand voltage:
500V AC/minute
- Working Temperature:
-25°C ~ +85°C
- Insulation resistance:
≥ 500M Ω
- Contact resistance:
≤ 20m Ω
- Material:
Housing-PA9T,UL94V-0
Terminal-Brass
Pad-Phosphor Bronze
- Applicable Wire:
AWG #26~ AWG #32

**RoHS
Compliant**

Ordering Information

WF - 3 - XX - PT - 1501 - X - 44

1.5P Wafer Solder/PCB Total PIN Contact Plated
 1.DIP RA 2.DIP VT 3.SMT RA 4.SMT VT
 PT: Tin

Packing
 1: Bag
 2: Tray
 3: Reel

REV.	REVISION RECORD	DATE	General Tolerances		
A	Original	11/22/16'	LINEAR	0.0 ±0.35 0.00±0.20	ANGLES ±3°
				UNIT: mm	
			A4	NAME	DATE
			APPROVED	WENDY	
			DESIGNER	WHITE	
			DRAWN	ANGEL	



TITLE: 1.5P Wafer SMT Right Angle 3.7H

DWG.NO.: WF3XXPT1501X-44 REV. A

SCALE 1 : 1 SHEET 1 OF 1