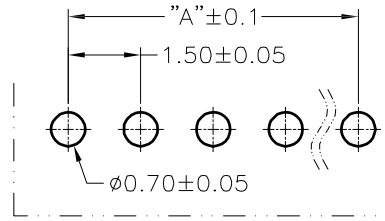
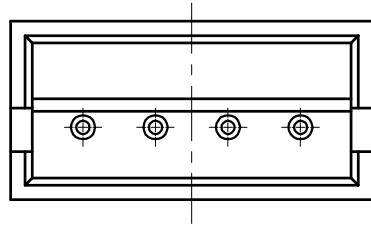
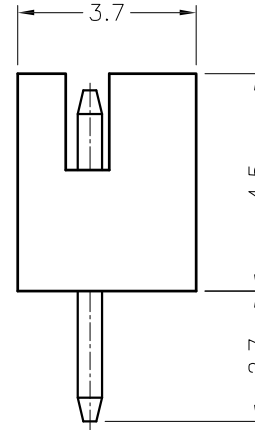
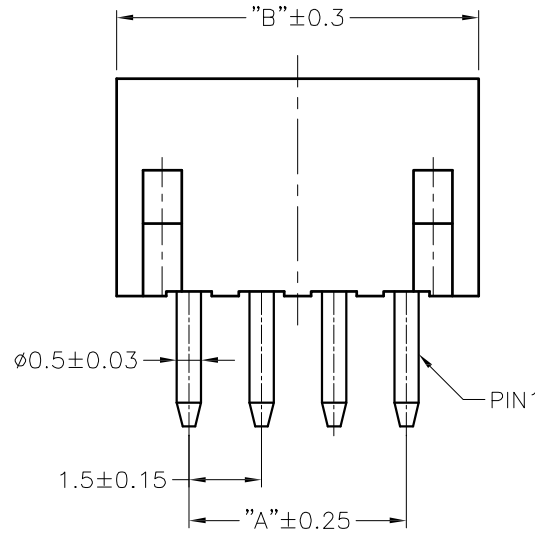


	Poles	DIM.A	DIM.B
A	2A	1.5	4.5
	3A	3.0	6.0
	4A	4.5	7.5
B	5A	6.0	9.0
	6A	7.5	10.5
	7A	9.0	12.0
	8A	10.5	13.5
	9A	12.0	15.0
	10A	13.5	16.5
C	11A	15.0	18.0
	12A	16.5	19.5
	13A	18.0	21.0
D	14A	19.5	22.5
	15A	21.0	24.0
	16A	22.5	25.5



P.C.B. LAYOUT



SPECIFICATION:

- Voltage rating:
AC, DC, 50V(rms)
- Current rating:
1A (AWG #26)
- Withstand voltage:
500V AC/minute
- Working Temperature:
-25°C~ +85°C
- Insulation resistance:
≥ 500M Ω
- Contact resistance:
≤ 20m Ω
- Terminal mtr'l:
BRASS
- Material:
Housing-PA46,UL94V-0
- Applicable Wire:
AWG #26~ AWG #32

Ordering Information

WF - 2 - XX - XX - 1501 - X - 44

Pitch=1.5

Solder/PCB Total PIN
 1.DIP RA
 2.DIP VT
 3.SMT RA
 4.SMT VT

Contact Plated
 PT : TIN
 G1 : Gold Flash
 G2 : 05 u"
 G3 : 10 u"
 G4 : 15 u"
 G5 : 30 u"
 G6 : 3u"
 G7 : 6u"
 G8 : 2u"

Packing
 1=Bag
 2=Tray
 3=Reel
 4=Tray



REV.	REVISION RECORD	DATE	General Tolerances		
			LINEAR	0.0 ± 0.35	ANGLES ± 3°
A	Original	08/15/13'	0.00 ± 0.20		
B	Revised P/N	01/23/15'	UNIT: mm		
			A4	NAME	DATE
			APPROVED	WENDY	
			DESIGNER	WHITE	
			DRAWN	ANGEL	



TITLE: 1.5P Wafer DIP VT			
DWG.NO.: WF2XXX1501X-44			REV. B
SCALE	1 : 1	SHEET	1 OF 1